



# Parent Forum Meeting

13/07/23

## Focus – School Development Plan



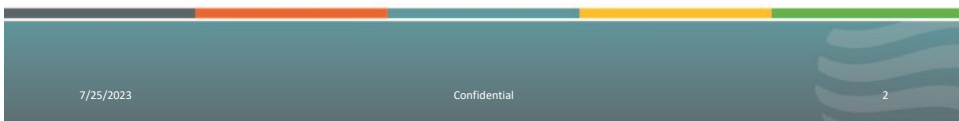
## Parent Forum

Our school's parent forum automatically includes every parent/carer with a child enrolled at the school.

Parent forums are a way for parents to get involved in school life. They are informal groups where parents can raise issues, be consulted on school policy and give their views.

As a member, you have:

- ☑ a right to advice and information about your child's education at the school
- ☑ the opportunity to be more involved with what the school is doing
- ☑ the opportunity, along with all the other parents, to have your views represented at Glendinning Academy



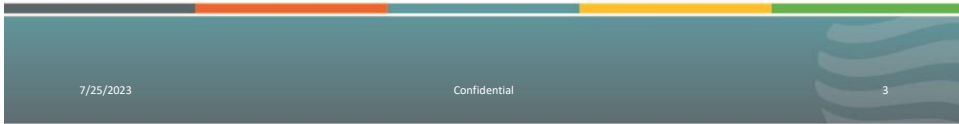


# School Development Plan

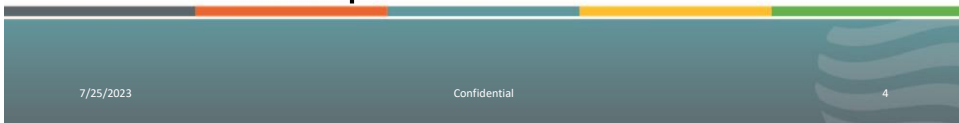
What have we focused on this year?

What has been achieved?

What are our priorities for the coming year?



Priority 2022 -2023	What has been achieved?
<p><b>Quality of Education</b></p> <ul style="list-style-type: none"> <li>Consistency in the teaching of reading</li> </ul>	<ul style="list-style-type: none"> <li>Reading Lead in place who monitors the delivery of phonics provision. Providing coaching to staff. Carries out all phonics assessments to ensure consistency</li> <li>RWInc and Accelerated reader embedded</li> </ul>
<ul style="list-style-type: none"> <li>PIECES curriculum planned and sequenced</li> </ul>	<ul style="list-style-type: none"> <li>PIECES Curriculum is planned and sequenced.</li> <li>Medium Term plans in place</li> </ul>





Priority 2022 -2023	What has been achieved?
<ul style="list-style-type: none"> <li>Responsive training programme focused on the development of staff skills, knowledge and understanding of SEND to support access to the curriculum</li> </ul>	<ul style="list-style-type: none"> <li>Weekly SEND Bitesize training carried out throughout the year which covers a wide range of additional needs.</li> <li>ELKLAN training used as core training for all new staff</li> <li>Internal and External training provided. Communication and Interaction team and Psychology Associates have delivered training to staff</li> </ul>
<b>Behaviour and Attitudes</b>	
<ul style="list-style-type: none"> <li>Consistency in use of Positive Behaviour System</li> </ul>	<ul style="list-style-type: none"> <li>KS2 have consistent system</li> <li>KS3 and 4 have a consistent system</li> </ul>

7/25/2023

Confidential

5



Priority 2022 -2023	What has been achieved?
<ul style="list-style-type: none"> <li>Develop role of Pastoral Support Worker alongside Pastoral manager</li> </ul>	<ul style="list-style-type: none"> <li>PSW is in place</li> <li>Leading on a large number of TAFs</li> <li>Supporting attendance monitoring</li> <li>Supporting families and students</li> </ul>
<b>Personal Development</b>	
<ul style="list-style-type: none"> <li>PSHE curriculum adapted and personalised to be responsive to the needs of our cohort.</li> </ul>	<ul style="list-style-type: none"> <li>Two PSHE sessions per week. One linked to core Jigsaw programme. Second responsive focused on neuro diversity, school based and community topics and careers.</li> </ul>

7/25/2023

Confidential

6

Priority 2022 -2023	What has been achieved?
<ul style="list-style-type: none"> <li>• Enrichment opportunities linked with the curriculum to ensure students have access to motivating experiences</li> <li>• Partnership and engagement with external providers to support student strengths in the Arts, Sport and Computing</li> </ul>	<ul style="list-style-type: none"> <li>• Enrichment linked with Outdoor Learning and PE</li> <li>• Reward trips</li> <li>• Music and Art projects</li> <li>• Plymouth Patriots</li> </ul>

7/25/2023

Confidential

7

Priority 2022 -2023	What has been achieved?
<b>Leadership and Management</b>	
<ul style="list-style-type: none"> <li>• Designated Safeguarding Officer to inform on attendance data and to establish effective plans for supporting poor attendance.</li> </ul>	<ul style="list-style-type: none"> <li>• Attendance monitoring carried out by PSM and PSW</li> <li>• SLT fortnightly attendance monitoring</li> </ul>
<ul style="list-style-type: none"> <li>• Senior leadership team to monitor behaviour data and put in effective plans to minimise challenging behaviour.</li> </ul>	<ul style="list-style-type: none"> <li>• Principal and Assistant Heads monitor and respond to daily behaviour data</li> <li>• Fortnightly SLT to monitor behaviour data patterns</li> </ul>

7/25/2023

Confidential

8



Priority 2022 -2023	What has been achieved?
<b>Leadership and Management</b> <ul style="list-style-type: none"> <li>To further develop peer to peer links with local schools with similar cohorts. To establish a special school, primary and secondary link.</li> </ul>	<ul style="list-style-type: none"> <li>Peer link with North Star Academy in Bristol to carry out mutual school improvement work</li> <li>Link with NAC</li> <li>Link with ACE Tiverton and The Mendip School</li> </ul>

7/25/2023

Confidential

9



### Priorities for 2023 2024

#### Quality of Education

- Feedback and Marking
- Embedding of new skills lists alongside PIECES Curriculum
- Adaptive Teaching
- Monitoring Cycle – Focused monitoring of curriculum subjects by curriculum leads
- Post 16 Consultation Outcome - Provision

#### Behaviour and Attitudes

- Behaviour Plan Review to ensure that pupil voice is threaded through/link with sensory profile
- Mental Health Ambassadors
- Further development of KS2 and KS3 and 4 systems – focus on strategies and reflection
- Anti Bullying Alliance

7/25/2023

Confidential

10



### Priorities for 2023 2024

---

#### Personal Development

---

- Transition from Year 9 – Year 11
- Transition Pathways
- Development of Citizenship and multi cultural experiences

---

#### Leadership and Management

---

- Parent Engagement
- Staff Wellbeing
- Assessment – Monitoring by Senior Leaders and Curriculum Co ordinators

7/25/2023

Confidential

11



### Are there any other priorities which parents would like us to focus on?

#### Suggestions for further development?

- Can parents be emailed to let them know of any changes to roles within the school
- Suggestion for an enrichment activity – Pennywell Farm
- Mapping of process to manage targeted behaviour
- Student voice – Eco Council and School Council in place, share the ideas of the pupil councils and their impact
- Add updates to the School Development plan to the halt termly newsletter

7/25/2023

Confidential

12